

Technical Parameters

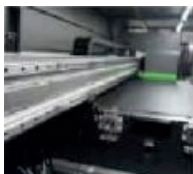
Model	GFX-RE-KY16-2.1
Print Head	Kyocera*
Number of Print Head	16
Control System	BYHX
Printing Width	1.85m & also available for (2.2m/2.6m)
Colors	8 Color
Speed (m ² /h)**	2 Pass (604x600dpi): 324m ² /h 3 Pass (604x900dpi): 212m ² /h 4 Pass (604x1200dpi): 156m ² /h
Ink Type	Reactive/Disperse/Pigment
Media Conveyor	Conveyor Belt
Carriage	Auto. Lifting(3-30mm adjustable)
Media Height	3-5mm
Carriage Scanning	High Precision Magnetic System
Ink Supply	Negative Pressure Ink Delivery System
Feeding System	Modular feeding unit (Up to 400mm diameter)
Water Unit	Sponge + Scraper + Brush + Towel roller
Print Media	Pure Cotton & Viscose
RIP Software	NeoStampa
Data Transmission	USB 3.1
Power	Printer - 220 V, 104 A Single / Three phase load distribution, 50Hz Dryer - AC 220 kW, 20 A, 50/60 Hz
Net Weight	3500kg(Approx)
Dimension (L x W x H)***	1235(L)mm x 4052(W)mm x 1808(H)mm
Carriage System	Magnetic Linear Rail



Conveyor Belt



Negative Pressure
Ink System



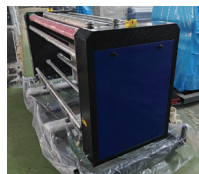
Magnetic Linear
Rail System



Washing Unit



Inbuilt Multi-roller
Feeding System



Modular
Feeding System

* All trademarks mentioned are the property of their respective owners and have been mentioned herein for reference purpose only.

** Maximum speed shown, speed will vary based on size of substrate, carriage speed, number of passes, feather conditions, machine maintenance and other factors.

*** Actual dimensions may vary slightly.